

LUNA-II YF™
Software Update manual v1.0

IMPORTANT

- Do not put multiple software files on the USB drive at once.
- Save only one software file to use then update.

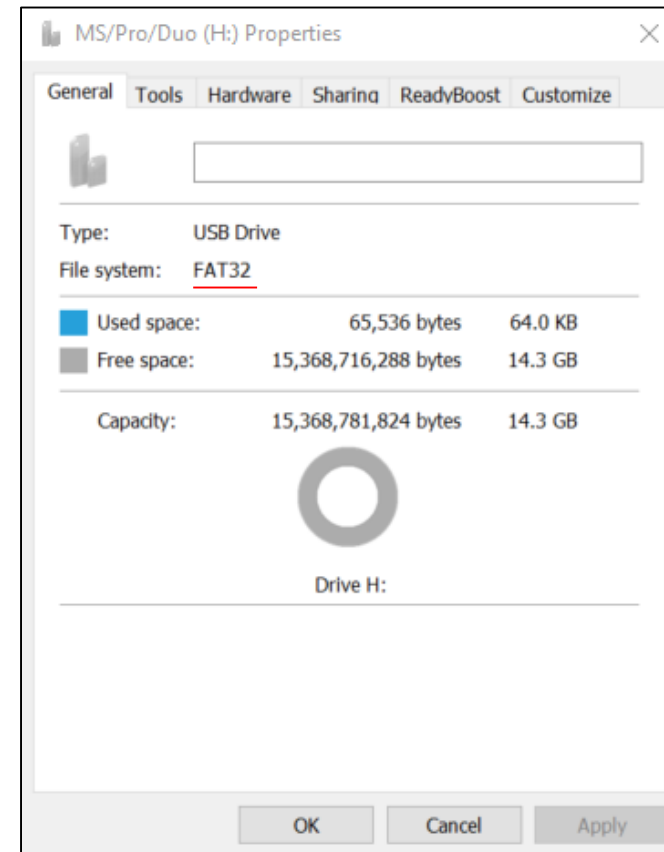
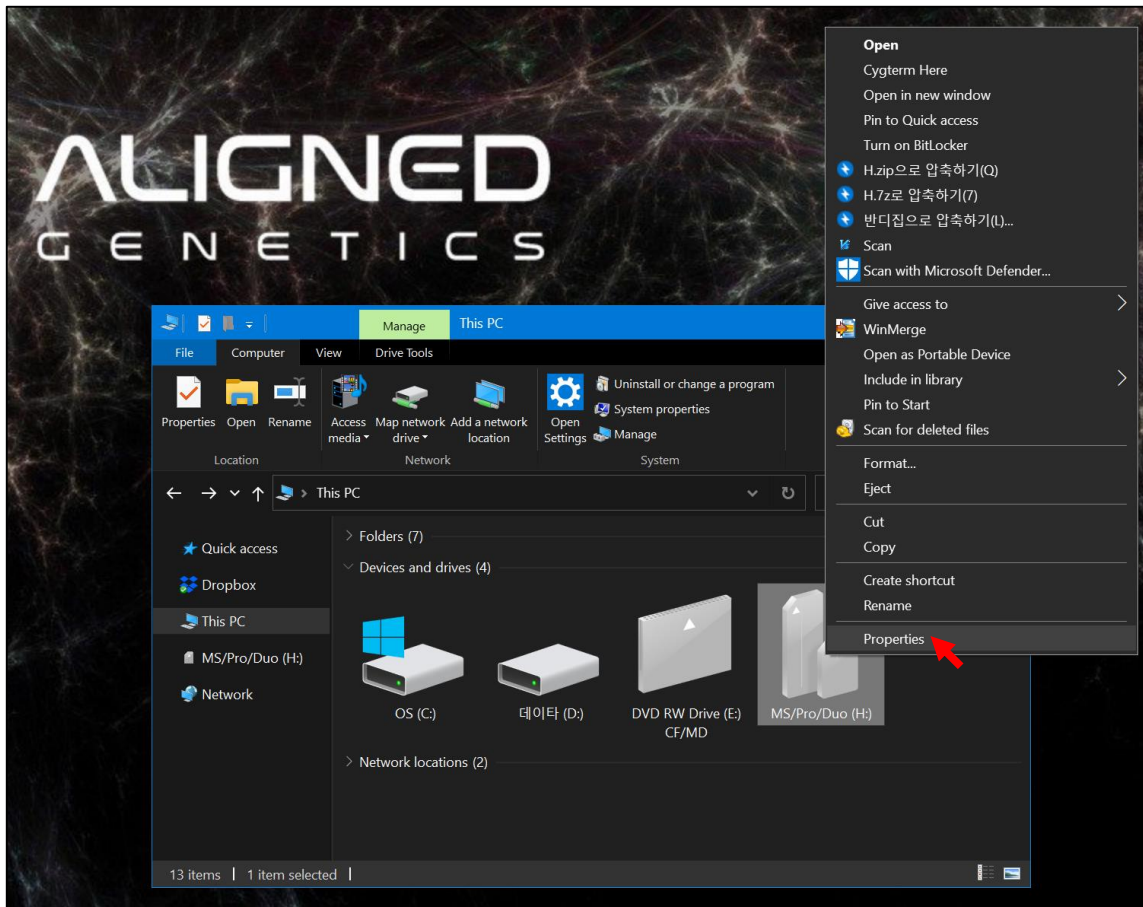
WARNING

- Because software update is potentially risky, if you do not encounter problems using the current version of software, it is recommended that you not update the software. To flash the software, do it with caution. Inadequate software update may result in system malfunction. Be sure to read the Release Notes before updating the software.
- #1. For software not available on website, contact techsupport@alignedgenetics.com
 - #2. IQOQ software requires a separate update file. Please contact techsupport@alignedgenetics.com with a photo of the software version and serial number.

❖ Prepare a USB memory in FAT32 format

● How to check

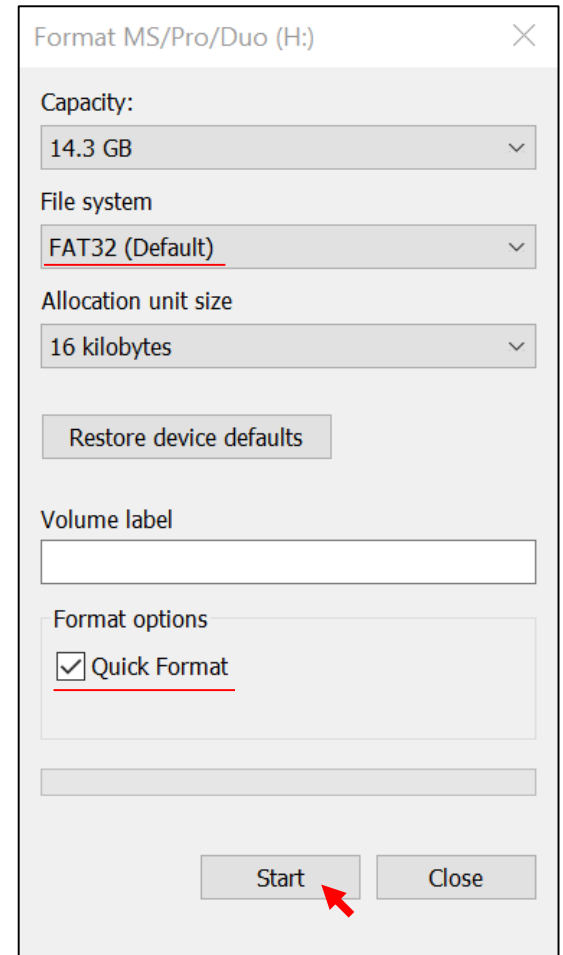
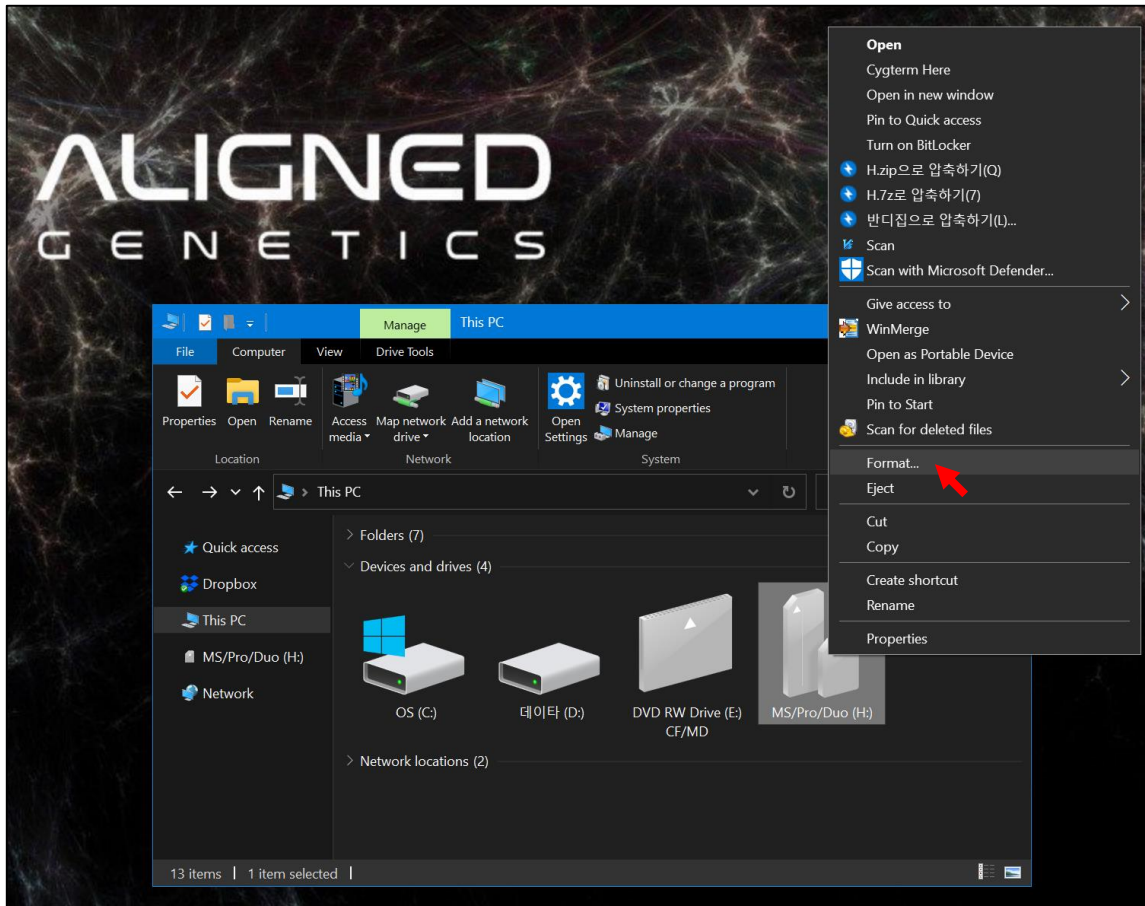
If "USB – Properties – File System: FAT32", go to page 4.
else, go to page 3.



❖ Prepare a USB memory in FAT32 format

● Format Method

Set the File system to FAT32, Enable Quick Format, and Click the Start button.



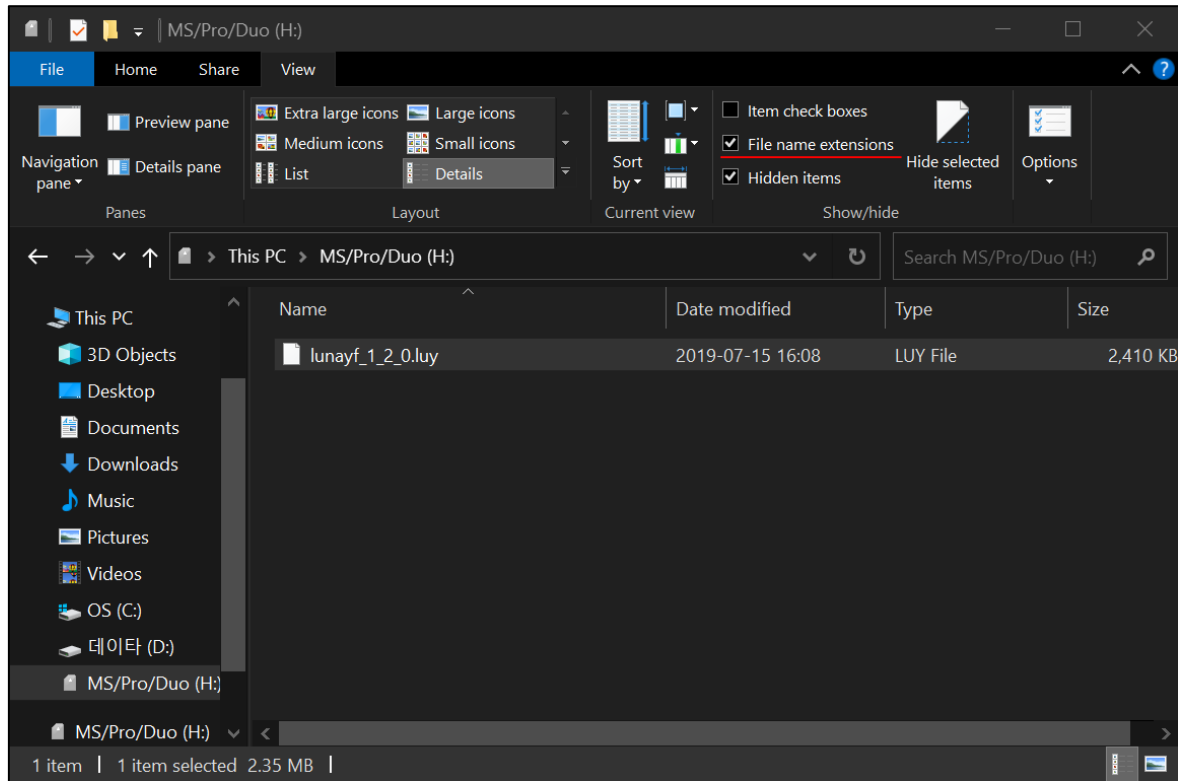
LUNA-II YF™ Software Update manual

❖ Save Firmware to USB Drive

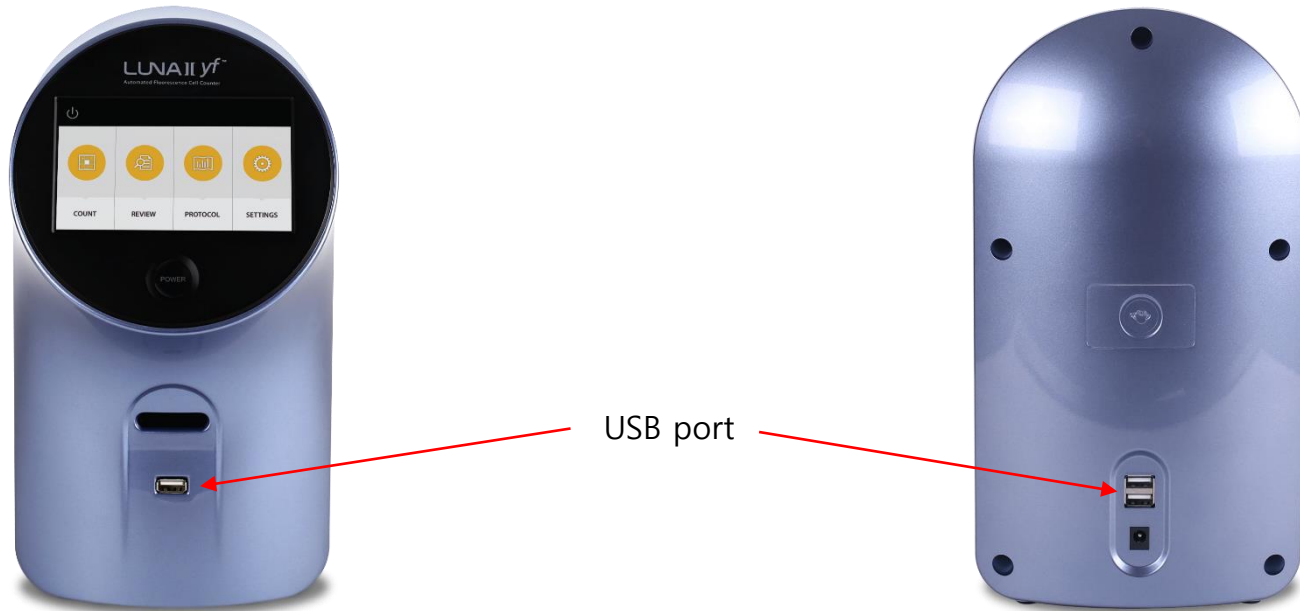
- Save the software file to the USB root director.
- File name and extensions must match up to case. (You can check it by enabling the file name extension)
- File name and extensions form: **lunayf_0_0_0.luy**

IMPORTANT

- Do not arbitrarily modify the file name.



- ❖ Insert the USB Drive into the USB port



LUNA-II YF™ Software Update manual

- ❖ Turn on LUNA-II YF and enter the settings menu and press the Software Update button to start the update

IMPORTANT

- Older versions may have slightly different UI.

